



Rockdale

Rock'n Talk

January 15, 2026

8:30 AM



Thank you for joining us!

Our World Our Voice



**ROCKDALE VAPA MAGNET
2025-2026**

On Our Agenda Today

- **What is Telehealth?**
- **PTA Updates**
- **De-Escalation & Restorative Practices**
- **Positive Behavior Supports**
- **2026-2027 Budget Summary**
- **Technology Reminders**
- **Calendar Updates**

PTA Updates
Victoria Ruan, PTA President

Telehealth

Alexis Navarro, School Nurse

Physical Telehealth

De-Escalation & Restorative Practices
Melanie Rodriguez, Psychiatric Social Worker

Positive Behavior Supports



RESTORATIVE RESPONSES FOR STUDENTS



VERBAL REMINDER

We all need reminders.



5 Minute Reflection

You have had a reminder, now let's have time to reflect on how to improve/make better choices.



Time for Reflection with Restorative Activity



Referral to Teacher/Admin

Additional restorative practices may be included at this step.



Parent Contact

Your parent/guardian must be contacted to help you solve the issues with possible extended consequences to correct behaviors.





Rock'n the 3 Rs

be respectful

- I am kind to **EVERYONE**.
- I use polite/thoughtful language: “please”, “thank you,” “excuse me.”
- I clean up after myself in all areas, and help keep common areas clean and neat.
- I respect the personal space and boundaries of others.
- I will listen for understanding.

be responsible

- I play by the rules of the game.
- I use equipment and materials correctly.
- I will tell an adult if there is a problem that I cannot solve by myself.
- I will follow directions the first time.
- I will roll the ball across the yard when it comes into my space.

be reflective

- Did I treat others as I want to be treated?
- Did I find a way to help and make something or someone better?
- Did I advise an adult or ask for help when I was unsure?
- Did I play fairly and follow the rules of the game?



Rock'n the 3'Rs

Respectful, Responsible, Reflective

Name

Grade Date

- Calm, Kind Voice
- Using Polite Words
- Respectful Listener
- Sharing/Collaboration
- Including Others in Play
- Resolves Conflicts Appropriately by Using Words
- Uses Rainbow Procedures
- Keeps Shared Areas Clean/Neat
- Team Player
- Follows Rules of Game
- Offers Help to Others
- Follow Directions 1st Time
- Accepts Responsibility for Behaviors
- Respects Personal Space

Incentives

What?: Prize Box, Special Activities

When?: Fridays

How?: Teachers pull ticket

Technology Transition

2nd Semester

LAUSD Definition:

The practice of cultivating a positive, authentic digital footprint that can be leveraged for college and career success.



Los Angeles Unified School District
Student Graduate Profile

Differentiated Digital Tools

Students should aim for **30-45 minutes** of "on-task" time in both **iReady Math** and **iReady Reading** each week, and at **least 60 minutes of ST Math.**

2nd Semester

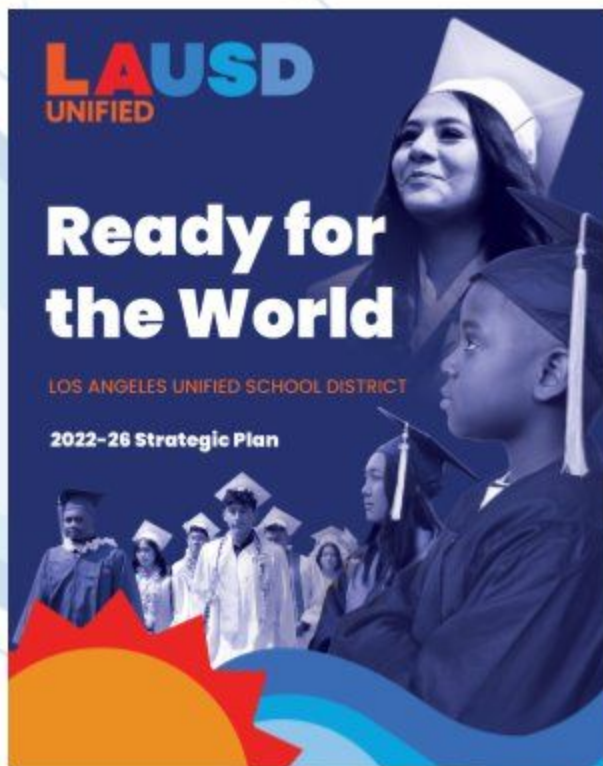
**Technology will remain at school
during the second half
of the school year.**

Why Technology Will Not be Sent Home

- Promoting balance and healthy habits
- Responding to parent feedback
- After-school program challenges
- Loss/Damaged Devices
- Shared commitment

Budget 2026-2027

Connections to the Strategic Plan



Pillar 1: Academic Excellence

High-Quality Instruction

Enriching Experiences

Eliminating Opportunity Gaps

College and Career Readiness

Pillar 2: Joy and Wellness

Welcoming Learning Environments

Whole-Child Well-Being

Strong Social-Emotional Skills

Outstanding Attendance

Pillar 3: Engagement and Collaboration

Strong Relationships

Accessible Information

Leading for Impact

Honoring Perspectives

Pillar 4: Operational Effectiveness

Data-Driven Decision-Making

Modernizing Infrastructure

Sustainable Budgeting

District of Choice

Pillar 5: Investing in Staff

Diverse Workforce

Professional Learning

Staff Wellness

High Performance Standards

The District Provides the Following*

- Principal
- Magnet Coordinator (Magnet)
- AP-EIS, (limited)
- Office Tech
- School Administrative Assistant
- Psychologists for SpEd (limited)
- Resources Specialist Teacher (SpEd)
- Classroom Teachers
- 2 3-hour campus aides
- Instructional Aide UTK Classrooms
- Full-time Library Aide
- 5-day Nurse
- Plant Manager
- Buildings and Ground Worker
- Cafeteria Manager
- Cafeteria Staff
- CORE Textbooks & Digital Resources
- Maintenance Supplies (limited)
- General supplies (limited)
- Supplemental Instructional materials (limited)

- **Rockdale must allocate discretionary funds for all other resources.**
- **The PTA may elect to fund additional resources.**

Next Year...

- 4 Instructional Assistants/Supervision Aides
- 1 Day of PSW
- 1/2 Time Library Aide Teacher
- 3 hour Parent/Community Representative
- Hopefully 3 days of Psych (1/2 day funded by Rockdale)
- Some Teacher Release Time for data analysis, planning, & Collaboration
- CAP funds for afterschool arts enrichment
- Through Prop 28 we have 8 semesters of Art
 - One day per week of visual arts, music, drama, and dance

**Discussion/
Questions?**

Calendar Reminders

- 1/19: Dr. Martin Luther King, Jr. Day (School Closed)
- 1/21: PTA Meeting @ 6:00 PM
- 1/23: Dragon Dance (Adjusted Arts Schedule)
- 1/23: ST Math 50% Goal
- 1/26: Student of the Month Assembly @ 8:30 AM
- 1/27: International Holocaust Remembrance Day
- 1/27: Reflections Reception 6:00-7:30 PM
- 1/28-30: AstroCamp (6th Grade)

Will schedule grade level release and revised TA Support schedule.

Thank you!
YOU ROCK!